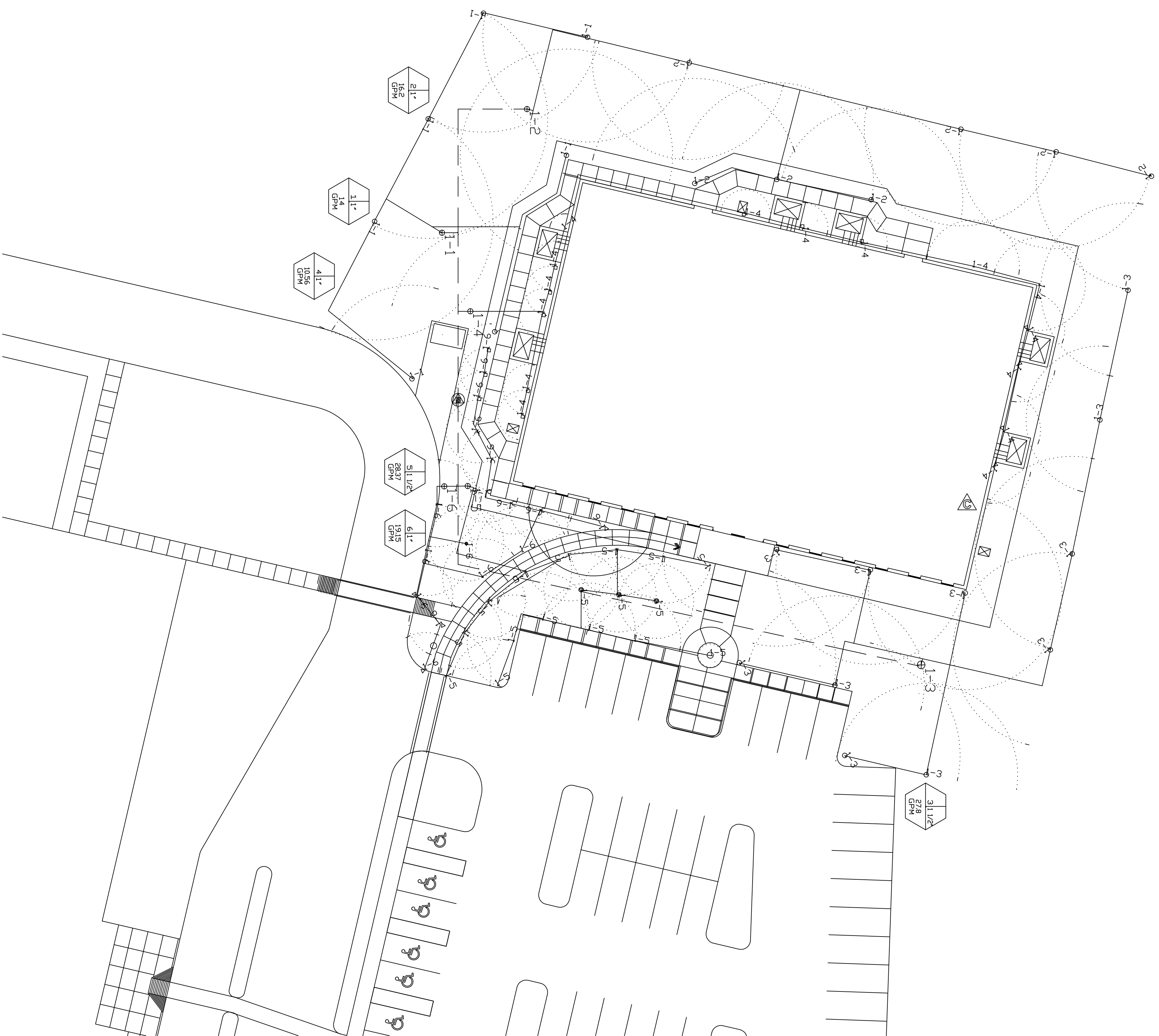


Property Line



Irrigation

Quantity	Symbol	Description	Part Number	Pressure	Flow	Radius
1	⌋	Rain Bird 10H 1804	10H	30	0.79	10
6	●	Rain Bird 12F 1804	12F	30	2.6	12
4	∇	Rain Bird 12H 1804	12H	30	1.3	12
4	∇	Rain Bird 12Q 1804	12Q	30	0.65	12
49	△	Rain Bird 15H 1804	15H	30	1.85	15
4	◊	Rain Bird 15Q 1804	15Q	30	0.92	15
7	○	Hunter PGP-03 PGP-ADJ	03	50	1.2	31
1	○	Hunter PGP-04 PGP-ADJ	04	50	1.6	34
8	○	Hunter PGP-05 PGP-ADJ	05	50	2	38
1	■	1 1/2 inch meter				
1	●	Fetco 765 - 1'	765 - 1'			
7	⊕	Rain Bird 100-DV-SS	100-DV-SS			
1	⊕	Rain Bird 150-PGA Angle	150-PGA			
1	▲	Rain Bird ESP-4MI	ESP-4MI			
215.49	---	Class 200 1 1/2"				
535.63	---	Class 200 1 1/4"				
143.64	---	Class 200 1"				
1128.42	---	Class 200 3/4"				

New Water Source

Water Meter Information

Meter Size: 1 1/2 inch meter  
 Static Pressure: 60  
 Change in Elevation: 10

Service Line Information

Pipe Category: Schedule 40 PVC  
 Pipe Size: Schedule 40 1 1/2"  
 Length: 10  
 Velocity: 8.6677

Recommendations

Maximum Recommended Flow: 55  
 Available Working Pressure: 48.97

